

RESOURCES

LIBRARY

NEWS ARTICLES

PAPERS &
DOCUMENTSTECHNICAL
DOCUMENTSPACIFIC ISLAND
REGIONAL MAPSLINKS TO PAGES
OF INTEREST
 TECHNICAL DOCUMENTS 


PEACESAT Operator Documentation

PEACESAT Technical Logs

PEACESAT Technical Event Log

This sheet is for logging problems and alignments. For a PDF of the PEACESAT Technical Event Log [click here](#). (For an example [click here](#))

PEACESAT Alignment Log

For a PDF of the PEACESAT Alignment Log [click here](#). (For an example [click here](#))

GOES-7 POINTING DATA

For a PDF of the current GOES-7 Pointing Data please [click here](#).

For a JPEG image of the current GOES-7 Pointing Data please [click here](#).

Please note the following for the current Pointing Data:

Elevation Alignments - "Long Polar Bolt"

Must be done at either the SOUTH or NORTH PEAK. This alignment should be done weekly to ensure a good signal for Analog and Digital connections.

Azimuth Alignments - "East\West"

Must be done at either the NORTH-SOUTH CROSSING or SOUTH-NORTH CROSSING. This alignment should only be done if repeated attempts to do an Elevation Alignment still leaves your Earth Station with a low receive signal. Please contact PEACESAT Honolulu prior to performing this alignment.

The pointing data is saved as an Adobe Acrobat PDF file. If you do not have a PDF Reader, it can be downloaded for free on the Adobe website:

<http://www.adobe.com/products/acrobat/readermain.html>

Network Diagrams:



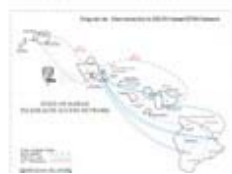
PEACESAT Network (PDF - 141KB)

This diagram specifies the interconnectivity found within the PEACESAT Network between the Pacific hub sites, the University of Hawaii, the Telecommunications and Information Policy Group (TIPG), Japan, and the Internet.



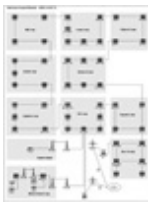
STAN Network (PDF - 224KB)

The STAN Network diagram depicts the broad scope of interconnections within the State of Hawaii, American Samoa as well as the setup of a typical STAN site.



DELTA Hawaii/STAN Interconnection (PDF - 131KB)

This diagram displays the fiber, T1, and microwave links between the DELTA Hawaii/STAN Network located within the State of Hawaii and the connection to the GOES-7 satellite.



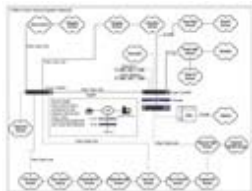
American Samoa E-RATE and DELTA Networks (PDF - 69KB)

This diagram displays how the American Samoa E-RATE and DELTA Networks interconnect with the PEACESAT Network via ATM, satellite, and microwave.



Guam E-RATE Network (PDF - 25KB)

The Guam E-RATE Network displays the schools and other systems within the Guam Education Network (GENET) and the connection to TIPG.



Saipan E-RATE Network (PDF - 64KB)

The Saipan E-RATE Network depicts the T1 and fiber connections in the Commonwealth of the Northern Mariana Islands Public School System (CNMI PSS).

◀ TECHNICAL DOCUMENTS ▶

[HOME](#) | [ABOUT US](#) | [SERVICES](#) | [PROJECTS](#) | [RESOURCES](#) | [HELP](#)

[PRINT VERSION](#) | [TEXT VERSION](#)

[TOP OF PAGE](#)

University of Hawaii at Manoa • 2424 Maile Way • Saunders Hall Room 713 • Honolulu, Hawaii 96822

Tel: (808) 956-8848 • Fax: (808) 956-8019 • Email: peacesat@elele.peacesat.hawaii.edu